









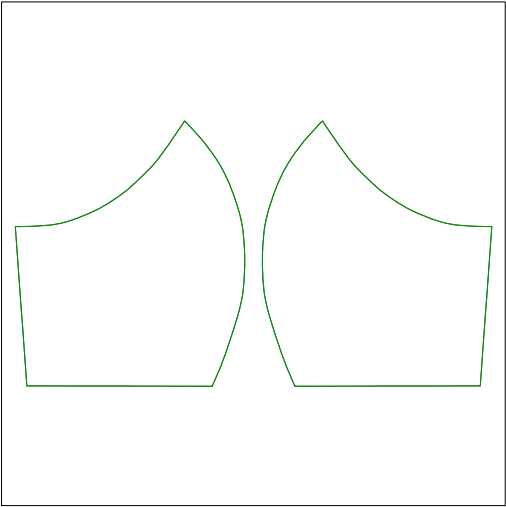
Terms and Conditions:
DISCLAIMER – This is not a medical grade face mask and is not meant to replace the surgical face mask. This mask will not protect against any virus but can aid in preventing the spread of diseases if worn properly. Wearing a DIY face mask is better than nothing at all. More information on the Coronavirus can be viewed on the CDC’s website.

Approved By:

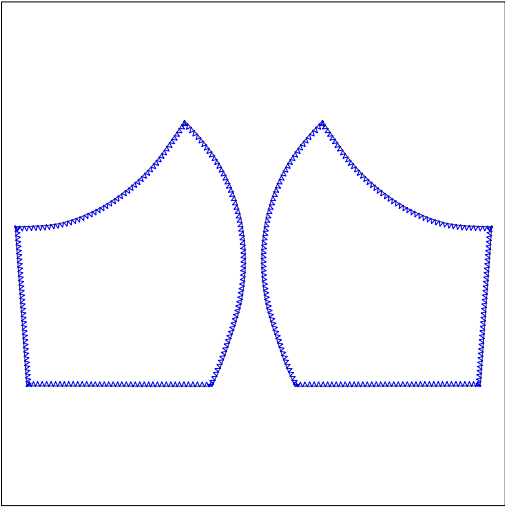
Date:

Production Worksheet Wilcom EmbroideryStudio – Designing Design: Adult Mask Title: Child Mask		Stitches: 6,089 Height: 151.1 mm Width: 268.3 mm Colors: 8 Colorway: Colorway 1 Zoom: 1:1	ZSKmachines.com
---	--	--	-----------------

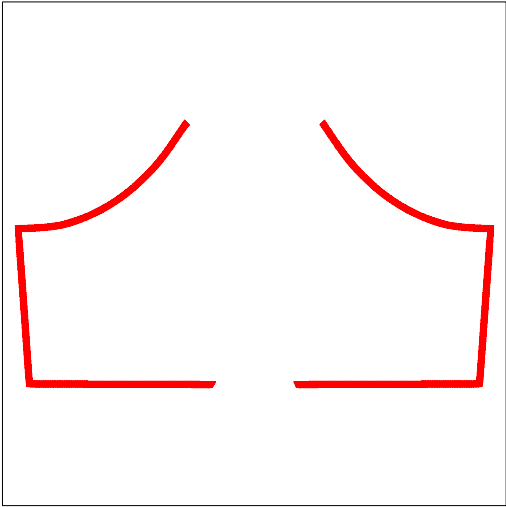
STOPS MUST BE PROGRAMMED ON THE MACHINE Color 1 - Placement Stitch for Mask Pieces STOP - PLACE FABRIC Color 2 - Tack Down Stitch for Mask Pieces *OPTIONAL STOP* - TRIM / CHECK FABRIC Color 3 - Partial Cover Stitch for Mask Pieces *OPTIONAL STOP* - ONLY TO CHECK Color 4 - Placement Stitch for Ties STOP - PLACE TIES DOWN Color 5 - Tack Down Stitch for Ties *OPTIONAL STOP* - TRIM / CHECK FABRIC Color 6 - Cover Stitch for Ties STOP - REMOVE MASK PIECES AND PLACE TOGETHER CHANGE HOOPS OR MOVE PANTOGRAPH Color 7 - Placement Stitch for Final Cover STOP - PLACE DOWN SANDWICHED MASK Color 8 - Cover Stitch for Curve END Machine format: ZSK TC Color changes: 8 Stops: 9 Trims: 19	#	N#	Color	St.	Code	Name
	1.	1		411	1	Dark Green
	2.	2		827	2	Blue
	3.	3		3,003	3	Red
	4.	4		141	4	Indigo
	5.	5		161	5	Aqua
	6.	6		368	6	Dark Magenta
	7.	7		210	7	Green
	8.	8		967	8	Black
Stop Sequence:						



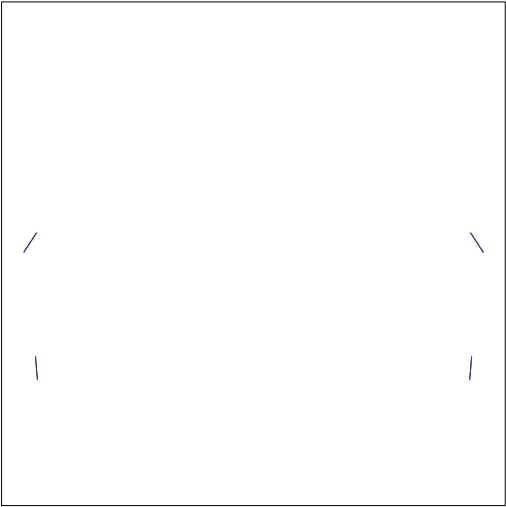
Stop #: 1
Element:
Code: 1
Name: Dark Green
Chart: Default
Stitches: 411
Thread used: 2.24m
Needle #: 1



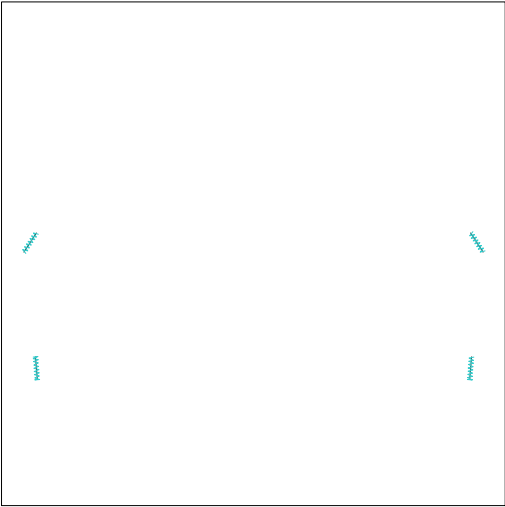
Stop #: 2
Element:
Code: 2
Name: Blue
Chart: Default
Stitches: 827
Thread used: 4.88m
Needle #: 2



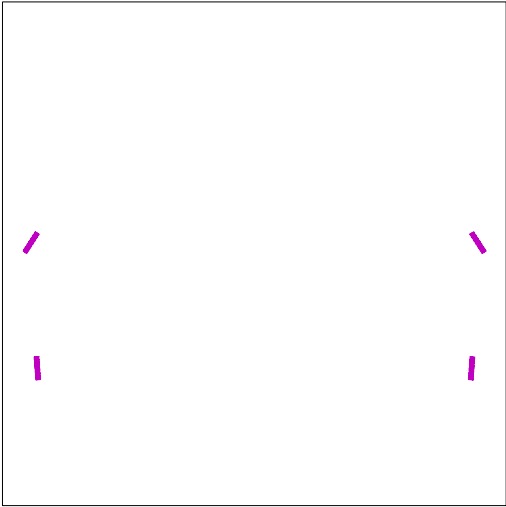
Stop #: 3
Element:
Code: 3
Name: Red
Chart: Default
Stitches: 3,003
Thread used: 20.57m
Needle #: 3



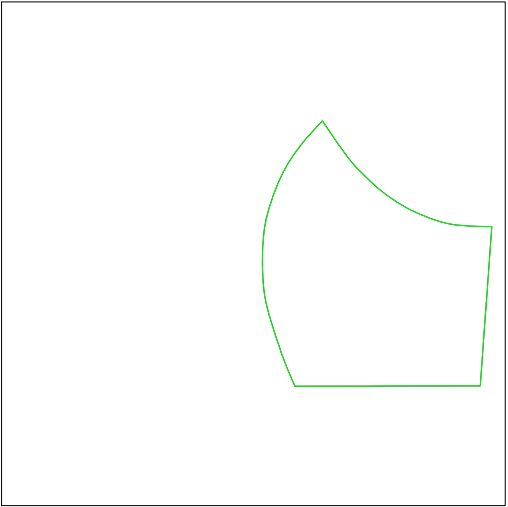
Stop #: 4
Element:
Code: 4
Name: Indigo
Chart: Default
Stitches: 141
Thread used: 0.42m
Needle #: 4



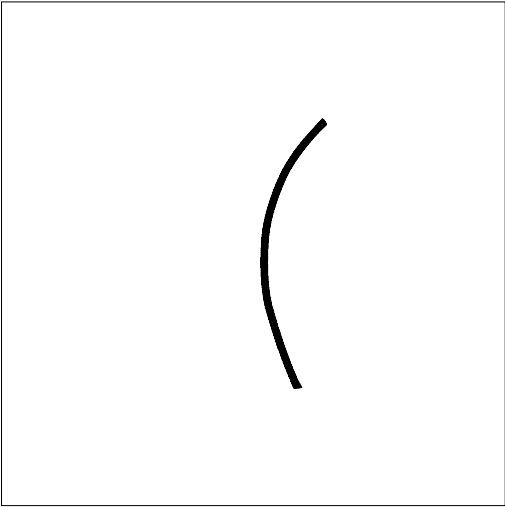
Stop #: 5
Element:
Code: 5
Name: Aqua
Chart: Default
Stitches: 161
Thread used: 0.64m
Needle #: 5



Stop #: 6
Element:
Code: 6
Name: Dark Magenta
Chart: Default
Stitches: 368
Thread used: 1.80m
Needle #: 6



Stop #: 7
Element:
Code: 7
Name: Green
Chart: Default
Stitches: 210
Thread used: 1.08m
Needle #: 7



Stop #: 8
Element:
Code: 8
Name: Black
Chart: Default
Stitches: 967
Thread used: 6.68m
Needle #: 8

ZSKmachines.com



Machine format: ZSK TC

Color changes: 8

Stops:	9
--------	---

Trims: 19

Hoop:	<None>
-------	--------

Colorway			Colorway 1
Background			
Product			Blanks\Blank
Stop	Color	Stitches	
1	1	411	1 Dark Green
2	2	827	2 Blue
3	3	3,003	3 Red
4	4	141	4 Indigo
5	5	161	5 Aqua
6	6	368	6 Dark Magenta
7	7	210	7 Green
8	8	967	8 Black